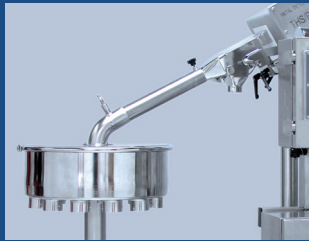


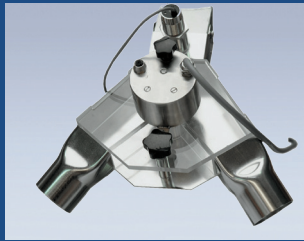
# Combined Unit DT / WIP



**Krämer**



Option:  
Product Diverter V4000



Option:  
Product Diverter V2000



Option:  
Various helix surfaces  
available on request

## Features

- **Contained system** for high potential agents
- **DT level:** up to OEB 5
- Highest **conveying capacity**
- Featuring an **acceleration sensor** that assures constant vibration, independent of the load / amount of tablets in the deduster
- **Vibration-free** housing, patented drive unit
- Easy **assembly and disassembly**, no tools are needed
- Improved **dedusting and deburring capabilities** thanks to optimized combination of vibration, dust agitation, air and vacuum suction

### Three different washing concepts

Concept A: Flooding with C820 Controller:

- Low water consumption (30 l/min) independent of deduster cylinder height.
- Washing speed depending on cylinder height

Concept B: Washing with C820 Controller:

- High water consumption (80–160 l/min) depending on cylinder height
- Fast washing speed

Concept C: Sequential washing with C920 Controller:

- Medium water consumption (50 l/min) depending on washing time
- Slow washing speed, depending on application

### Deduster model E5000WIP

- Upward conveying range 400–1600 mm
- Conveying of tablets of 3–35 mm diameter, and capsules
- Conveying capacity/throughput (per hour):
  - 90'000 (round tablet Ø 25 x 7 mm)
  - 1'800'000 (round tablet Ø 9.1 x 3.2 mm)
  - 6'300'000 (round tablet Ø 4.8 x 2.3 mm)
  - 770'000 (oblong 19.4 x 8.6 x 6 mm)

### Design

- Constructed according to GMP specifications
- Spray nozzles all over the cylinder depending on cylinder height and washing concept

### Features

- Compact combination of deduster and metal detector
- Flexible use (on left or right side of tablet press / capsule filling facility)
- Deduster on telescopic column: flexible inlet height
- Required floor area: 600 x 900 mm
- Drive unit protection rating: IP65

### Metal detector Type: Ceia THS/PHS21-WIP

- CFR 21 Part 11 compatible
- Waterproof and dust tight according to IP65

### Detection head:

- Aperture 100 x 40 mm
- Capacity up to 1'800'000 tablets / hour

### Spherical Sensitivity

- Ferrous (Fe): 0.3 mm
- Non-Ferrous (70Cu30Zn): 0.35 mm
- Stainless Steel (AISI316): 0.5 mm

